

How to apply for a home with the council or a housing association



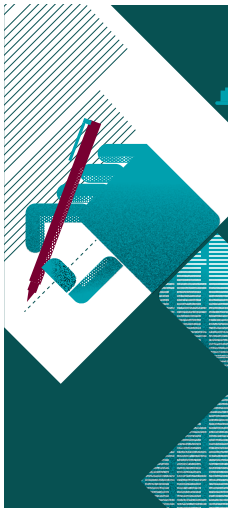
How to apply

Finding a safe and secure home suited to your needs can be difficult if you need to move. There are many options you could consider including shared ownership, private renting, sheltered housing or social housing.

Social housing is affordable housing provided by a local council or registered social landlord (often a housing association). To access social housing in Islington you need to apply to join the housing register.

Living out of the borough

Please note: that Islington Council does not take applications from anyone living outside the borough and these applicants should contact their own local authority for advice and assistance.



The first step is to complete the online housing application form available on the Islington Council website www.islington.gov.uk/housing.

Applicants approved for housing will need to provide satisfactory evidence of identity and past and current residence for themselves and all household members. The council will request documentary evidence from each applicant and will carry out enquiries to confirm the information as necessary.

How to bid

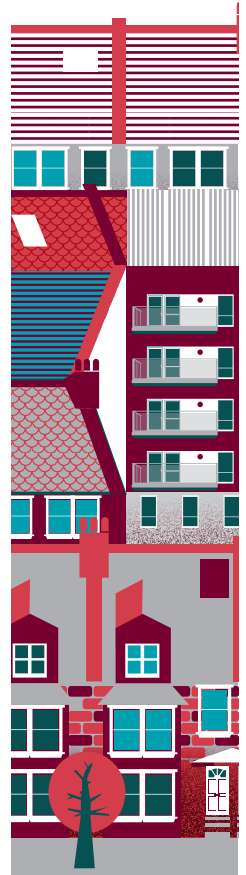
If you are approved for housing you will be given details on how to bid.

Home Connections is a Choice Based Letting scheme (CBL). This means instead of the council allocating you a home, you can have more choice about the location and type of home you live in.

You can choose a home from the list available each week, the list is published on line and is also available at local housing offices.

To be able to bid, you must have been assessed on the council's housing list and been awarded **120 points** or more.

- Information about the homes that have been previously let are published on the home connections website, this information will provide you with a good idea of how popular a particular property or area is.
- You can bid for property with fewer bedrooms than your household is assessed as needing, as long as you won't become overcrowded.
- You are not able to bid for larger properties than you need.
- You can bid for three properties each week. Properties are available for bidding on Thursdays and bidding closes at midnight on the following Sunday each week.



Change of address or circumstances

It is the responsibility of all applicants to notify Islington Council in writing of any change in their housing or household circumstances. It may be necessary to provide documentary evidence to support the change in circumstances. Applications may be de-activated whilst the council reassess the information provided. The re-assessment of the application may result in an increase or decrease of points. All applicants will be notified in writing of any changes.



The points scheme

Key

TR: Council tenants

HA: Housing Association tenants

HL: Homeless applicants

WL: All other applicants

Criteria

Points

Who is eligible

Criteria	Points	Who is eligible			
		TR	HA	HL	WL
Applicants who are resident in the borough or have a relevant local connection with the borough	100	●	●	●	●
Opposite sex overcrowding; where two people of the opposite sex have to share a bedroom and one is 10 years or older (unless they are over 16 and living as a couple.	10	●	●	●*	●
Where there is more than one occurrence additional points will be given per occurrence	5	●	●	●*	●
For each additional bedroom required.	20	●	●	●*	●
Additional points for households lacking 2 or more bedrooms (per household).	30	●	●	●*	●
Sharing or lacking access to facilities i.e. cooking facilities, hot or cold water or toilet.	10			●*	●
Medical needs	40, 80, 150	●	●	●	●
Welfare needs	40, 80, 150	●	●	●	●
Islington key workers scheme.	90				●
Islington care leavers	90			●	●

Children's Services	150 or 200	●	●	●	●
New Generation scheme: 1 Beds 2 Beds Where an NGS applicant has a disability.	20 90 20				● ● ●
Decants	100 or 200	●			
Major works	60 or 120	●			
Management transfers	60 or 120	●			
Relationship breakdown	50	●			
Under occupying social housing tenants – points per bedroom under occupying.	80	●	●		
Under occupying tenants in two bedroom properties.	150	●	●		
All applicants will receive 5% of their total housing needs points for each year on the list starting from the week that housing needs points are added to an application – residence and waiting time points are not included.					
For homeless applicants this will be from the date of application. *Except those in reception centres.					

The points scheme

Applicants are given points for housing need factors and these points are added together. The needs of all individuals in the applicant's household will be taken into account when points are given. Points may be reviewed at any time and may be varied upwards or downwards depending on changes in circumstances.

You can bid in the following ways

Internet

www.islington.gov.uk/homeconnections

Text

Key in, bid # your ID number # your pin # advert number to 07800 140 724.
Please do not put spaces in your text.

Television

If you are a **Sky or Virgin** customer you can bid in the following ways:

Sky users:

Sky subscribers can navigate to the site by using their remote control:

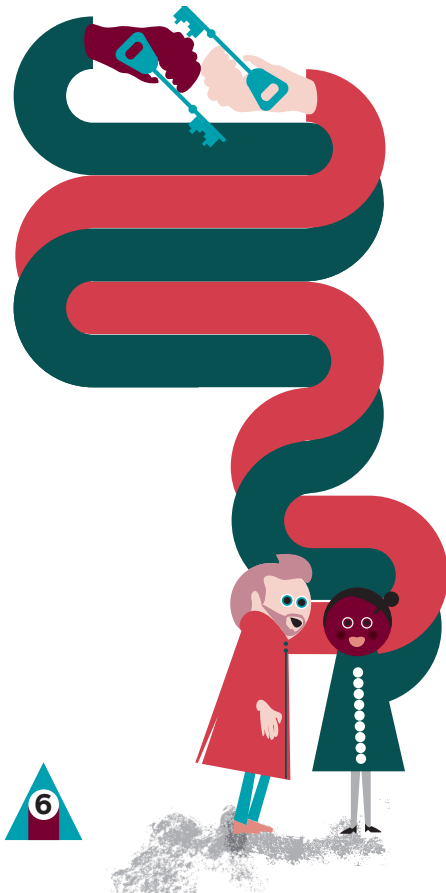
- Go to **Community Channel (539)**
- Press **Red**

Virgin Media customers should:

- press the **Home** button
- Choose **Interactive** button
- select **Local & Directory Enquiries**
- select Looking Local

Or

- Go to **Community Channel (233)**
- Press **Red**



Further housing options available

Shared ownership

Schemes to part rent/part buy a property.

For more information please visit www.sharetobuy.com/firststeps

Sheltered Housing

Housing for older people.

For more information on please visit www.islington.gov.uk/housing

Seaside and country scheme

Housing for older people out of London.

For more information please visit <http://seaside.housingmoves.org>

Under Occupation Scheme

Help for older people who are under occupying their home.

For more information please visit www.islington.gov.uk/housing

Homeswapper

Homeswapper is a national mutual exchange scheme.

For more information please visit www.homeswapper.co.uk

New Generation Scheme

A scheme for the son's and daughters of council, housing association or private sector tenants.

For more information please visit www.islington.gov.uk/housing

Key worker housing

Housing for social workers, metropolitan police officers, occupational therapists, teachers and nurses working in Islington.

For more information please visit www.islington.gov.uk/housing

Homeshelter

For more information please call **020 7527 2000** or visit

www.islington.gov.uk/housing

Housing moves

A London wide housing mobility scheme for council and housing association tenants.

For more information please visit www.housingmoves.org

Do you need this information in another language or reading format such as Braille, large print, audio or Easy Read? Please contact 020 7527 2000.

Portuguese

Se pretender esta informação na sua língua por favor contacte 020 7527 2000.

Bengali

যদি আপনি এই তথ্য গুলো আপনার নিজ ভাষায় পেতে চান তাহলে দয়া করে 020 7527 2000 নম্বরে যোগাযোগ করুন।

Somali

Haddii aad jeclaan lahayd macluumaadkan oo ku qoran luqadaada fadlan la xidhiidh 020 7527 2000.

Turkish

Buradaki bilgilerin Türkçesini istiyorsanız, lütfen 020 7527 2000 numaraya telefon edin.

Greek

Εάν θέλετε αυτές τις πληροφορίες στη δική σας γλώσσα παρακαλώ τηλεφωνήστε στο 020 7527 2000.


Spanish


Si desea esta información en su idioma, llame al 020 7527 2000.

Useful contacts

Housing Options Team

Housing Aid Team
Islington Customer Centre,
222 Upper Street, London, N1 1XR

 020 7527 4140

 020 7527 4136


Minicom 0800 073 0536


 rehousing@islington.gov.uk

 www.islington.gov.uk/housing

Housing Solutions Team


Housing Aid Team
Islington Customer Centre,
222 Upper Street, London, N1 1XR

 020 7527 2000



 020 7527 6307

Minicom 0800 073 0536

 advice.housing@islington.gov.uk

 www.islington.gov.uk/housing

 **Benefit service** PO Box 34750, London, N7 9WF

 020 7527 3628  020 7527 4976 Minicom 020 7527 3628

 benefits.service@islington.gov.uk  www.islington.gov.uk

 Printed on environmentally friendly paper.

Published June 2017